

## Faster, Safer Weighing for Shipping and Receiving



### Faster Weighing

Speed up your weighing operation by spending less time loading and unloading. Simply move the pallet jack or other vehicle into the scale's open area and lower the load onto the platform. There are no ramps to slow up the loading process.



### Greater Protection

Protect your investment by eliminating the concentrated loading that can damage your scale. Because of the scale's U-shaped design, there is no need to drive forklift trucks, pallet jacks, or other wheeled vehicles across the platform.



### Safer Operation

By eliminating ramps and pits, this U-shaped scale makes your weighing operation safer. Workers never need to strain to push heavy loads up an incline. The easy loading process means less chance of injuries and accidents.



### Exceptional Versatility

Customize your scale to meet a variety of weighing needs. Attachments are available to widen the platform or convert it into a standard floor scale. These options enable you to weigh different sizes and types of loads.



### PTA464 Pallet Scale

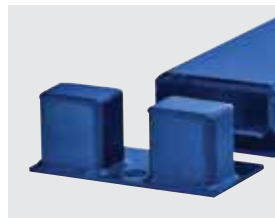
The PTA464 pallet scale is a low-profile scale that provides an excellent return on your investment. It delivers accurate, reliable weighing while standing up to constant use in tough environments. The U-shaped platform simplifies the job of loading pallets and containers onto the scale. There are no ramps or pits, so the scale costs less to install, saves floor space, and speeds up loading and weighing. Whether workers use a forklift truck, pallet jack, or powered walkie to load the scale, they never need to drive up a ramp or across the scale platform. Eliminating ramps reduces the opportunity for injuries and accidents. Because wheeled vehicles never drive across the platform, there is less of the wear and tear that can shorten a floor scale's life.

## PTA464 Pallet Scale

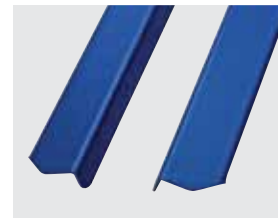
### Specifications

Standard Platform Size	48x48, 48x60, and 60x60 inches (1219x1219, 1219x1524, and 1524x1524 mm)
Available Capacities	1000 lb / 600 kg, 2500 lb / 1500 kg, and 5000 lb / 3000 kg
Platform Height	3 <sup>5</sup> / <sub>16</sub> inches (84 mm)
Standard Construction	Two-part, epoxy-painted carbon steel
Load Cell Type	Four 350-ohm load cells; hermetically sealed stainless steel
Load Cell Suspension	Stainless steel rocker-foot assembly
Junction Box	Stainless steel IP69K
End Loading	100% end loading
Standard Operating Temp.	14°F to 104°F (-10°C to 40°C)
Metrological Approvals	NTEP
Hazardous Area Approvals	FM, CSA, Ex, ATEX
Shipping Weight	215, 230, and 240 lb (98, 104, and 109 kg)
Standard Instrument Cable Length	25 feet (7.6 meters)

Features	Benefits
Top-of-Floor Installation	No need for ramps or pits.
U-shaped Design	Easy to load with a pallet jack.
Hermetically Sealed Load Cells	Maximum protection in wet and corrosive environments.
Locating Plates	Position the scale securely.
Integral Lift Handles	Easy to lift the scale for cleaning and moving.
Optional Wheel Kit	Easy to move scale to new location.



Bumper Guard



Leg Wideners



Side Rails



Load Plate



Wheel Kit



Integral Lift Handle

### The Right Scale for Your Application

Choose from a range of options to customize a pallet scale to meet the specific needs of your application.

### Options

- Wheel kits for easy portability
- Bumper guards protect the scale from damage
- Side rails make loading easier
- Leg wideners for weighing larger pallets
- Load plates provide full-sized platforms
- Locating plates prevent scale movement
- Free-standing columns
- Instrument mounting brackets
- Factory calibration for fast startup



Produced in a facility that is



### Mettler-Toledo, LLC

1900 Polaris Parkway  
Columbus, Ohio 43240  
Tel. (800) 786-0038  
(614) 438-4511  
Fax (614) 438-4900

Specifications subject to change without notice.  
© 2019 Mettler-Toledo, LLC  
10/2019  
30129966

[www.mt.com/floorscale](http://www.mt.com/floorscale)

For more information