

METTLER TOLEDO

## The METTLER TOLEDO 4 Series

Certifiable and GMP-certified Quality

from milligrams to tons



- **A single operating principle**  
from milligrams to tons
- **A variety of connection options** –  
from serial interface to network  
integration
- **A variety of applications** – from simple  
weighing to multi-functional database  
applications
- **Rugged industrial quality**

**Intelligent precision  
from milligrams to tons**

**METTLER TOLEDO**

# Perfect weighing: The «basic» level

## Areas of application

- Incoming and outgoing goods
- Quality control
- Industrial production
- Post and logistics
- Pharmaceutical and cosmetics industries
- Food industry

### Easy, effective and efficient!

The 4 Series «basic» level is the ideal solution for applications in which simple weighing is key. Optimized for quick and easy weighing applications, six clearly-structured large-format keys with tactile feedback combine with the easy-to-read 7-segment backlit LC display for clear and fast results on a device which couldn't be easier to use.



# You can count on it: The «count» level

## Areas of application

- Incoming and outgoing goods
- Quality control
- Industrial production
- Metalworking and electronics industries
- Pharmaceutical and cosmetics industries

### Every item counts!

METTLER TOLEDO's 4 Series «count» level has been designed for real industrial counting. 10 function keys designed specifically for reliable, easy and fast counting make counting even small items child's play. The analogue reference scale interface, which is available as an option, can be used to connect an analogue weighing platform in order to create a cost-effective reference scale counting system.



# More than just counting: The «count+» level

## Areas of application

- Incoming and outgoing goods
- Quality control
- Industrial production
- Logistics
- Metalworking and electronics industries
- Pharmaceutical and cosmetics industries
- Rental scales

### Simple and easy to use

Counting, totalizing and checking – METTLER TOLEDO's 4 Series «count+» level has it all in one device. The numeric keypad supports the simple direct input and storage of tare values, item weights, IDs and target values. Simple and easy to use, the 4 Series «count+» level has a solution for every requirement.



# Stay flexible with the «smart+» level

## Areas of application

- Incoming/outgoing goods
- Quality control
- Industrial production
- Metalworking and electronics industries
- Pharmaceutical and cosmetics industries
- Post and logistics
- Casinos/banks
- Rental scales

### «smart+» for total flexibility

However diverse and complex your everyday tasks might be, you will always have the ideal scale with the 4 Series «smart+» level.

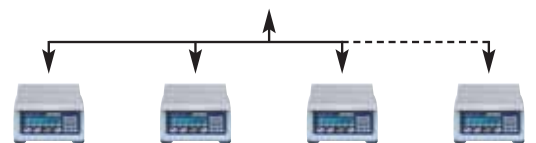
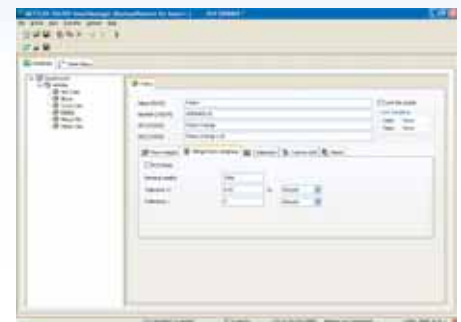
- High-resolution active dot matrix display: Big Weight® display in plain text to ensure clarity at all times.
- User-definable function keys and operating sequences to make your everyday operations easier and improve the quality of your weighing processes.
- Customer-specific unit: Simply set your own unit (e.g. m<sup>3</sup>, litre, etc.).
- Efficient inventory management: Article database for more than 1500 data records, which can be individually defined and entered or called up via a barcode or using the keyboard.
- Create your own labels. Five user-definable templates are provided to meet every requirement and are compatible for use on any type of printer.
- The key to high quality: «Good parts» can be calculated easily using the upstream check function linked to the totalization function.
- Maintain an overview: The host function means that you still access just one central database, regardless of whether this is stored on your PC or in another «smart+» level.



## It's all under control: The SmartManager

Maintain an overview at all times with the SmartManager application and configuration software for the «smart+» level

- Standard PC interface for **user-friendly and efficient data entry.**
- Online interaction with your «smart+» level(s): SmartManager is your central database.
- More than 10 000 data records – enough for virtually all applications – can be **administered and processed easily.**
- **Import and export functions** from/to MS Excel for post-processing or integration into existing databases.
- It's easy to configure and set up your «smart+» level at home or in the office. All settings that can be made on the scale can also be made in comfort on a PC via a simple selection menu.
- Simply make the settings once then transfer them to all your «smart+» levels – saving you time and increasing reliability.
- **Define the optimum scale configuration for your individual requirements.** Optimize your «smart+» for your specific application.



# METTLER TOLEDO's 4 Series: Intelligent precision from milligrams to tons



## Product features and benefits

- **Rugged industrial quality** – Die-cast aluminium housing combined with adherence to the most exacting EMC standards (acc. to EN61326-1 Class B, EN61000-3-2, EB61326-1 and the electrical safety requirements of EN61010-1) ensure long service life and fail safety during day-to-day production, thereby safeguarding investments.
- **A single operating principle from milligrams to tons** – Reduced training time, fewer application errors and therefore reduced costs.
- **A variety of connection options: From serial interface to network** – The numerous connection options (serial, network, USB, digital I/O, etc.) support the setting up of weighing systems, with the connection of analogue weighing platforms and even the integration of scales into networks.
- **A variety of applications: From simple weighing to multi-functional database applications** – The ideal product for every application, a solution for every weighing problem.
- **MinWeigh as standard, i.e. reliability for your weighing data** –

The minimum weight or a warning that it has been undershot is displayed on the scale screen. A METTLER TOLEDO service engineer will determine the measurement uncertainty of the scale on site in accordance with DKD guidelines and calculate a minimum weight for the scale based on local conditions.

- **Save time and money with ex-works-certified precision: Certified MonoBloc® scale with internal adjustment weights or certified scales with strain gauge weighing cells** – Choose rugged strain gauge weighing cells or high-precision MonoBloc® technology. Preassembled certified scales can be used immediately. There is no need for a special visit by a weights and measures official or service engineer for the second stage of official certification.
- **Available for mains or battery operation** – You can choose to power the scale via the mains, a built-in battery or an external power supply.
- **GMP-certified scale series** – The scales are suitable for GMP (Good Manufacturing Practice) working.

## Overview of functions

Functions	basic				count			count+			smart+		
	BBA422	BBA425	BBK422	IND425	BBA432	BBK432	IND435	BBA442	BBK442	IND445	BBA462	BBK462	IND465
Simple weighing		●				●			●			●	
Dynamic weighing		●				●			●			●	
Zeroing		●				●			●			●	
Taring		●				●			●			●	
Transfer		●				●			●			●	
Counting		–				●			●			●	
Totalizing		–				–			●			●	
Checking		–				–			●			●	
Dosing and counting to target value		–				–			●			●	
Freely configurable operating sequences		–				–			–			●	
Freely definable units		–				–			–			●	
Label printing		–				–			–			●	
Memory space for tare/APW/target values		–				–			●			●	
Internal article database		–				–			–			●	
Date/time		–				–			●			●	
Numeric keypad		–				–			●			–	
Alphanumeric keypad		–				–			–			●	
Internal alibi memory 150.000 weight (opt.)		–				–			–			○	
<b>Interfaces</b>	1 RS232				1 RS232			1 RS232			3 RS232 + 1 PS/2		
RS232 (add-on) (optional)		○				○			○			–	
RS485 (optional)		○				○			○			○	
Ethernet (optional)	○	–	○	○		○			○			○	
USB (slave) (optional)		○				○			○			○	
Digital I/O (optional)		○				○			○			○	
Analogue reference scale (optional)		–				○			○			○	

# BBA4...: Reliable measurement accuracy for any location



## Specifications

### Conformance:

Certifiable quality/ex-works-certified model to OIML, Class III with 2 x 3000e or 1 x 6000e plus other non-certifiable resolutions (15,000d/30,000d) as options

### Type of protection:

- BBA422/BBA432/BBA442/BBA462 tested and approved to IP43 (EN60529)
- BBA425 protected against dust and water jets to IP65 (EN60529)

### Design:

Die-cast aluminium housing with chrome-nickel steel load plate

### Operating temperature:

-10°C to +40°C/15 – 85% humidity/

Maximum operating altitude 4000 m above sea level

### Display:

BBA422; BBA425: Backlit 7-digit/7-segment LC display

BBA432; BBA442: Height: 20 mm (BBA422, BBA425) or 35 mm (BBA432, BBA442)

BBA462: Backlit active dot matrix display (235 x 64 pixels); Height: 35 mm



### Keypad:

Large, clearly-structured keypad with tactile feedback

BBA422/BBA425: 6 keys: ON/OFF; Reset; Tare; Transfer; Change unit; Clear tare

BBA432: 10 keys: ON/OFF; Reset; Tare; Transfer; Toggle gross/net; High resolution; Toggle scale 1 and scale 2; Toggle count and weigh mode; Ten's reference, Variable reference

BBA442: 25 keys: ON/OFF; Reset; Tare; Transfer; Info; Toggle scale 1 and scale 2; Toggle count and weigh mode; Display item weight; Ten's reference; Variable reference; Memory; ID; +/-; Delete; Numeric keypad

BBA462: 25 keys: ON/OFF; Reset; Tare; Transfer; 6 freely-definable function keys (soft keys); Call database; Toggle: Upper/lower case; Delete; Alphanumeric keypad  
Units: g, kg, t, oz, lb

### Units:

### Power supply:

- Country-specific power supply:  
240 V, 50 Hz, 70 mA / 230V, 50 Hz, 70 mA /  
120 V, 60 Hz, 90 mA / 100V, 50 / 60 Hz, 90 mA
- Battery operation (nickel-metal hybrid battery):  
Connection via AC adapter: 90 – 264 V, 47 – 63 Hz, 300 mA;  
Incoming power supply on scale: 24V, 1,3A

### Interfaces:

- BBA422: 1 RS232 (standard), additional RS232, RS485, USB, Ethernet, digital I/O interface options
- BBA425: 1 RS232 (standard), additional RS232, RS485; USB, digital I/O interface options
- BBA432/BBA442: As BBA422, plus optional analogue reference scale interface
- BBA462: 3 RS232, 1 PS/2 (standard), optional: 2 RS232 + RS485/Ethernet/USB/analogue/digital I/O + PS/2, 1 RS232 + RS485/Ethernet/USB/digital I/O + analogue + PS/2

## Technical data

Model	BBA422/BBA432/BBA442/BBA462					BBA425				
	-3 SM	-6 SM	-15 LA	-35 LA	-60 LA	-3 SM	-6 SM	-15 LA	-35 LA	-60 LA
Dimensions (mm)	265 x 335 x 100		360 x 370 x 115			265 x 335 x 100		360 x 370 x 115		
Load plate (mm)	200 x 240		240 x 350			200 x 240		240 x 350		
Capacity (kg)	3	6	15	35	60	3	6	15	35	60
Weighing range 1/2 (kg)	1.5/3	3/6	6/15	15/35	30/60	1.5/3	3/6	6/15	15/35	30/60
Readability/Verification scale interval 1/2 (g)	0.5/1	1/2	2/5	5/10	10/20	0.5/1	1/2	2/5	5/10	10/20
Max. readability (not certifiable) (g)	0.05	0.1	0.2	0.5	1	0.05	0.1	0.2	0.5	1
Repeatability (s) (g)	0.05	0.1	0.2	0.5	1	0.15	0.2	0.2	0.5	1
Linearity (s) (g)	+/-0.05	+/-0.1	+/-0.2	+/-0.5	+/-1	+/-0.15	+/-0.2	+/-0.2	+/-0.5	+/-1
Min. permissible item weight (g)*	0.01	0.02	0.05	0.1	0.2	-	-	-	-	-
Type of protection	IP43**					IP65				
Stabilization time (s) (seconds) ***	~ 1.0									

\* The values indicated represent the minimum permissible item weights. In order to count with maximum possible accuracy, we recommend that the item weight is set no lower than 1d of the scale (standard) and/or that the optimization function integrated as standard or a reference scale is used (not for the BBA422/ BBA425).

\*\* Not with built-in Ethernet interface.

\*\*\* Depends on selected filter setting.

# BBK4...: MonoBloc® technology – Maximum precision for more complex requirements

## Specifications



### Conformance:

Certifiable quality/ex-works-certified model with internal adjustment weight to OIML, Class II with up to 60,000e or 600,000d (optional)

### Type of protection:

BBK422/BBK432/BBK442/BBK462 tested and approved to IP43 (EN60529)


### Design:

Die-cast aluminium housing with chrome-nickel steel load plate

### Operating temperature:

+10 °C to +30 °C / 15 to 85 % humidity

### Display:

BBK422; BBK432; Backlit 7-digit/7-segment LC display   
 BBK442: Height: 20 mm (BBK422) or 35 mm (BBK432, BBK442)  
 BBK462: Backlit active dot matrix display (235 x 64 pixels); Height: 35 mm

### Keypad:

Large, clearly-structured keypad with tactile feedback

BBK422: 6 keys: ON/OFF; Reset; Tare; Transfer; Change unit; Delete tare

BBK432: 10 keys: ON/OFF; Reset; Tare; Transfer; Toggle gross/net; High resolution; Toggle scale 1 and scale 2; Toggle count an weigh mode; Ten's reference, Variable reference

BBK442: 25 keys: ON/OFF; Reset; Tare; Transfer; Info; Toggle scale 1 and scale 2; Toggle count and weigh mode; Display item weight; Ten's reference; Variable reference; Memory; ID; +/-; Delete; Numeric keypad

BBK462: 25 keys: ON/OFF; Reset; Tare; Transfer; 6 freely-definable function keys (soft keys); Call database; Toggle: Upper/lower case; Delete; Alphanumeric keypad

**Units:** g, kg, t, oz, lb

### Power supply:

- Country-specific power supply:  
240 V, 50 Hz, 70 mA / 230 V, 50 Hz, 70 mA /  
120 V, 60 Hz, 90 mA / 100 V, 50 / 60 Hz, 90 mA
- Battery operation (nickel-metal hybrid battery):  
Connection via AC adapter: 90 – 264 V, 47 – 63 Hz, 300 mA;  
Incoming power supply on scale: 24 V, 1,3 A

### Interfaces:

- BBK422: 1 RS232 (standard), additional RS232, RS485, USB, Ethernet, digital I/O interface options
- BBK432/BBK442: As BBK422, additional optional analogue reference scale interface
- BBK462: 3 RS232, 1 PS/2 (standard), optional: 2 RS232 + RS485/ Ethernet/USB/analogue/digital I/O + PS/2, 1 RS232 + RS485/ Ethernet/USB/digital I/O + analogue + PS/2

## Technical data

### BBK422/BBK432/BBK442/BBK462

Model	- 3 DXS	- 3 XS	- 6 DXS	- 6 XS	- 6 DSM	- 6 SM	- 15 DLA	- 15 LA	- 35 DLA	- 35 LA
Dimensions (mm)	265 x 335 x 100						360 x 370 x 115			
Load plate (mm)	165 x 165				200 x 240		240 x 350			
Capacity (g)	600/3100	3100	1200/6100	6100	1200/6100	6100	3500/15100	15100	7000/35100	35100
Readability (standard) (g)	0.01/0.1	0.01	0.01/0.1	0.01	0.1/1	0.2	0.1/1	0.5	0.1/1	0.1
Verification scale value (g)	0.1	0.1	0.1	0.1	1	0.2	1	0.5	1	1
Max. readability (not certifiable) (g)	0.001	0.001	0.001	0.001	0.01	0.01	0.01	0.01	0.01	0.01
Repeatability (s) (g)	0.008	0.008	0.008	0.008	0.08	0.08	0.08	0.08	0.08	0.08
Linearity (s) (g)	0.02	0.02	0.02	0.02	0.1	0.1	0.1	0.1	0.1	0.1
Min. permissible item weight (g)*	0.002	0.002	0.004	0.004	0.004	0.004	0.01	0.01	0.02	0.02
Type of protection	IP43**									
Stabilization time (s) (seconds) ***	~ 1.0									

\* The values indicated represent the minimum permissible item weights. In order to count with maximum possible accuracy, we recommend that the item weight is set no lower than 1d of the scale (standard) and/or that the optimization function integrated as standard or a reference scale is used (not for the BBK422).

\*\* Not with built-in Ethernet interface.

\*\*\* Depends on selected filter setting.

# IND4...: Flexibility is king

## Specifications



### Conformance:

Certifiable to OIML, Class III: max. 1 x 7000e

### Type of protection:

IND425/IND435/IND445/IND465 tested and approved to IP65 (EN60529)

### Design:

Die-cast aluminium housing with cable gland for connection to any weighing platform via heavy gauge screw fitting

### Operating temperature:

-10 °C to +40 °C / 15 – 85 % humidity/

Maximum operating altitude 4000m above sea level

### Display:

IND425; IND435; IND445: Backlit 7-digit/7-segment LC display;  
Height: 20 mm (IND425); 35 mm (IND435; IND445)

IND465: Backlit active dot matrix display (235 x 64 pixels);  
Height: 35mm

### Keypad:

Large, clearly-structured keypad with tactile feedback

IND425: 6 keys: ON/OFF; Reset; Tare; Transfer; Change unit; Delete tare

IND435: 10 keys: ON/OFF; Reset; Tare; Transfer; Toggle gross/net; High resolution; Toggle scale 1 and scale 2; Toggle count and weigh mode; Ten's reference; Variable reference

IND445: 25 keys: ON/OFF; Reset; Tare; Transfer; Info; Toggle scale 1 and scale 2; Toggle count and weigh mode; Display item weight; Ten's reference; Variable reference; Memory; ID; +/-; Delete; Numeric keypad

IND465: 25 keys: ON/OFF; Reset; Tare; Transfer; 6 freely-definable function keys (soft keys); Call database; Toggle: Upper/lower case; Delete; Alphanumeric keypad  
g, kg, t, oz, lb

### Units:

### Power supply:

- Country-specific power supply:  
240 V, 50 Hz, 70 mA / 230V, 50Hz, 70mA /  
120 V, 60 Hz, 90 mA / 100V, 50 / 60 Hz, 90mA
- Battery operation (nickel-metal hybrid battery):  
Connection via AC adapter: 90 – 264 V, 47 – 63 Hz, 300 mA;  
Incoming power supply on scale: 24 V, 1,3A



### Interfaces:

IND425 (standard), additional RS232, RS485, USB, Ethernet, digital I/O interface options

IND435/IND445: As IND425, additional optional analogue reference scale interface.

IND465: 3 RS232, 1PS/2 (standard), optional: 2 RS232 + RS485/  
Ethernet/USB/analogue/digital I/O + PS/2, 1 RS232 + RS485/  
Ethernet/USB/digital I/O + analogue + PS/2

**Can be connected to any METTLER TOLEDO analogue scale!**

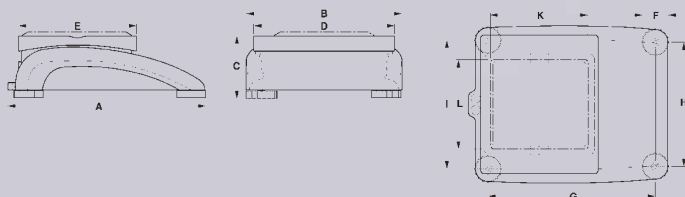
## Technical data

Model	IND425/IND435/IND445/IND465
Dimensions (mm)	277 x 200 x 71
Dimensions of option box (mm)	277 x 200 x 36
Max. resolution (not certifiable)	300.000d
Max. resolution (certifiable)	1 x 7.000e, OIML
Linearization	Can be set to 3-point or 5-point
Linearity (s) (g)	+/- 0.01 % of def. max. capacity
A/D converter for input signal (certifiable)	1,3µ V/e
Output signal	2 mV/V
Power supply, connected weighing cell	8.2 V
Impedance	80 – 1.000 ohms
Type of protection	IP65*

\* Not with built-in Ethernet interface

## Dimensions

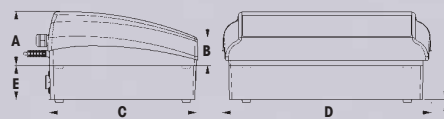
### BBA4../BBK4..



Dimensions in mm

	A	B	C	D	E	F	G	H	I	K	L
XS	335	265	100	240	200	46	276	208	215	165	165
SM	335	265	100	240	200	46	276	208	215	—	—
LA	370	360	115	350	240	52	311	305	311	—	—

### IND4..



Dimensions in mm

A	B	C	D	E
71	36	200	277	49

### Accessories:

Stand for IND4.. (330 mm)

Stand for IND4.. (660 mm)

Wall mount for IND4..

PVC protective cover (for BBA4../BBK4..)

PVC protective cover (for IND4..)

Sprinter printer

Zebra LP2824 printer

Zebra LP2844 printer

Auxiliary display

Barcode reader (PS/2)

Miniature keypad (PS/2)

Various connecting cables

Anti-theft device (for BBA4../BBK4..)

# Would you like to find out more about the 4 Series?

**Mettler-Toledo International Inc.**  
**CH-8606 Greifensee, Switzerland**  
 Tel. +41-1-944 22 11,  
 Fax +41-1-944 30 60

**AT Mettler-Toledo GmbH., 1230 Wien**  
 Tel. (01) 604 19 80, Fax (01) 604 28 80

**AU Mettler-Toledo Ltd., Port Melbourne, Victoria 3207**  
 Tel. (03) 9644 57 00, Fax (03) 9645 39 35

**BE N.V. Mettler-Toledo S.A., 1932 Zaventem**  
 Tel. (02) 334 02 11, Fax (02) 334 03 34

**BR Mettler-Toledo Ind. e Com. Ltda., 06455-000 - Barueri - SP**  
 Tel. (11) 4166-7400, Fax (11) 4166-7401

**CA Mettler-Toledo Inc., Toronto, Canada**  
 Tel. (905) 612-9777, Fax (905) 612-8561

**CH Mettler-Toledo (Schweiz) AG, 8606 Greifensee**  
 Tel. (01) 944 45 45, Fax (01) 944 45 10

**CN Mettler-Toledo (Changzhou) Scale&System Ltd.**  
 Tel. (519) 664 20 40, Fax (519) 664 19 91

**CZ Mettler-Toledo, s.r.o., 100 00 Praha 10**  
 Tel. 272 123 150, Fax 272 123 170

**DE Mettler-Toledo GmbH, 35353 Giessen**  
 Tel. (0641) 50 74 44, Fax (0641) 50 71 29

**DK Mettler-Toledo A/S, 2600 Glostrup**  
 Tel. (43) 270 800, Fax (43) 270 828

**ES Mettler-Toledo S.A.E., 08908 Barcelona**  
 Tel. (93) 223 76 00, Fax (93) 223 76 01

**FR Mettler-Toledo S. A., 78220 Viroflay**  
 Tel. (01) 30 97 17 17, Fax (01) 30 97 16 16

**GB Mettler-Toledo Ltd., Leicester, LE4 1AW**  
 Tel. (0116) 235 7070, Fax (0116) 236 5500

**HK Mettler-Toledo (Hong Kong) Ltd., Kowloon, Hong Kong SAR**  
 Tel. (852) 2744 1221, Fax (852) 2744 6878

**HR Mettler-Toledo, d.o.o., 10000 Zagreb**  
 Tel. 01 29 58 130, Fax 01 29 58 140

**HU Mettler Toledo Kft., 1139 Budapest**  
 Tel. (01) 288 40 40, Fax (01) 288 40 50

**IN Mettler-Toledo India Pvt Ltd, Mumbai 400 072**  
 Tel. (22) 2857 08 08, Fax (22) 2857 50 71

**IT Mettler-Toledo S.p.A., 20026 Novate Milanese**  
 Tel. (02) 333 321, Fax (02) 356 29 73

**JP Mettler-Toledo K.K., Tokyo 143 - 0006**  
 Tel. (3) 5762 0606, Fax (3) 5762 0756

**KR Mettler-Toledo (Korea) Ltd., Seoul 137-130**  
 Tel. 82-2-3498-3500, Fax 82-2-3498-3555

**KZ Mettler-Toledo Central Asia, 480009 Almaty**  
 Tel. 3272 980 834, Fax 3272 980 835

**MX Mettler-Toledo, S. A. de C. V., México, D.F. C.P. 06430**  
 Tel. (55) 5547 5700, Fax (55) 5547 2128

**MY Mettler-Toledo (M) Sdn. Bhd., 40150 Selangor**  
 Tel. (603) 784 55 773, Fax (603) 784 58 773

**NL Mettler-Toledo B.V., 4004 JK Tiel**  
 Tel. (0344) 63 83 63, Fax (0344) 63 83 90

**NO Mettler-Toledo A/S, 1008 Oslo**  
 Tel. 22 30 44 90, Fax 22 32 70 02

**PL Mettler-Toledo Sp. z o.o., 02-822 Warszawa**  
 Tel. (22) 545 06 80, Fax (22) 545 06 88

**RU Mettler-Toledo Vostok ZAO, 101000 Moscow**  
 Tel. (095) 921 92 11, Fax (095) 921 78 68

**SE Mettler-Toledo AB, 120 08 Stockholm**  
 Tel. 08-702 50 00, Fax 08-642 45 62

**SG Mettler-Toledo (S) Pte Ltd, Singapore 139959**  
 Tel. 65-6890 0011, Fax 65-6890 0012

**SI Mettler-Toledo, d.o.o., 1236 Trzin**  
 Tel. (01) 530 8050, Fax (01) 562 1789

**SK Mettler-Toledo s.r.o., 82104 Bratislava**  
 Tel. (02) 434 27 496, Fax (02) 433 37 190

**TH Mettler-Toledo (Thailand) Ltd., Bangkok 10320**  
 Tel. 02 723-0300, Fax 02 719-6479

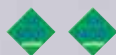
**TW Mettler-Toledo Pac Rim AG - Taiwan Branch, Taipei**  
 Tel. (2) 2657 8898, Fax (2) 2657 0776

**UK Mettler-Toledo Ltd., Leicester, LE4 1AW**  
 Tel. (0116) 235 0888, Fax (0116) 236 5500

**US Mettler-Toledo, Inc., Columbus, OH 43240**  
 Tel. 800-METTLER, Fax (614) 438 4900

**For all other countries:**  
 Mettler-Toledo GmbH  
 Sales International  
 PO Box VI-400, CH-8606 Greifensee  
 Tel. +41-1-944 22 11, Fax +41-1-944 31 70

[www.mt.com](http://www.mt.com)



**Quality certification.** Development, production and testing to ISO 9001. Environmental management system to ISO 14001.



**Global service.** Our extensive service network is one of the best in the world and is your guarantee of optimum product availability and service life.



**CE conformance.** The CE mark means that you can rest assured that our products meet the requirements of the latest EU guidelines.



Certified version available

This brochure has been printed on environmentally-friendly paper.

Technical modifications reserved.  
 © Mettler-Toledo GmbH 09/06  
 Printed in Germany  
 MTSI 22013401A